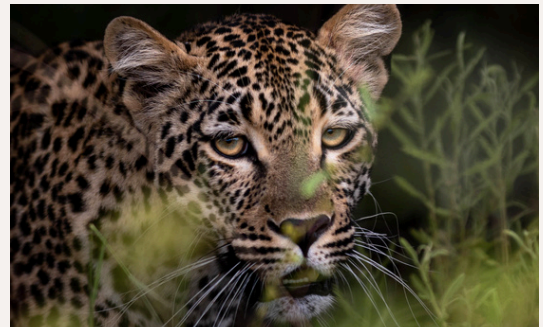


SABI SANDS PREDATOR EXPERIENCE

Embark on an extraordinary photo safari in the renowned Sabi Sands, South Africa's premier private game reserve. Experience unparalleled wildlife encounters while enjoying a seamless blend of luxury and wilderness immersion. Stay in luxurious private suites surrounded by wildlife and incredible staff to assist with your every need. Join us for an unforgettable experience where nature, relaxation and world-class photography come together.

**Accommodation: Elephant Plains Game Lodge, or
Notten's Bush Camp**



ITINERARY

5-DAY PHOTO SAFARI:

DAY 1:

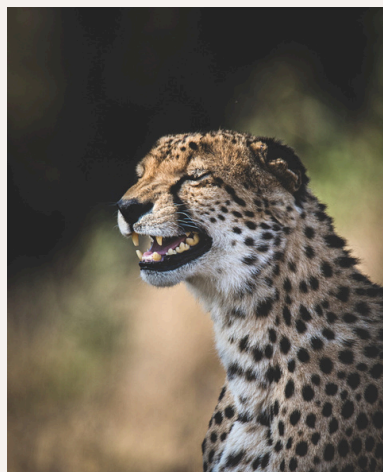
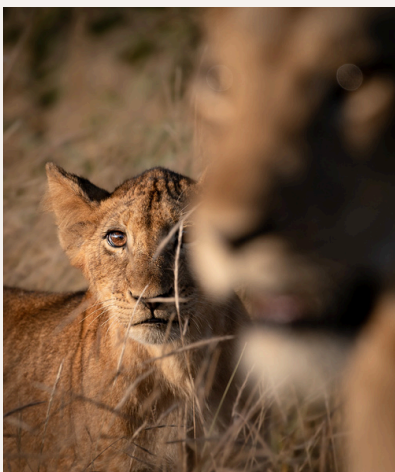
- Air transfer from Johannesburg O.R. Tambo to the Elephant Plains or Skukuza (Notten's) airstrip (departure at 11:30 or 13:00 with check-in up to 1 hour before) and then transfer by road to the Lodge.
- Enjoy lunch and check in before afternoon drive with sundowners and snacks.
- Enjoy dinner at the lodge and settle in for the evening.
- Your guide will provide photographic instruction throughout the day, with time at the end of each sighting for debriefing.

DAYS 2-4:

- Morning game drive with coffee and snacks.
- Breakfast back at the lodge and enjoy leisure time until lunch.
- Enjoy an afternoon game drive including sundowners and snacks.
- End your day off with dinner back at the lodge.
- Your guide will provide photographic instruction throughout the day, with time at the end of each sighting for debriefing.

DAY 5:

- Final morning game drive with coffee and snacks before returning to the lodge for breakfast.
- Optional lunch before transferring back to Johannesburg via the Elephant Plains or Skukuza (Notten's) airstrip (departure at 10:00 or 13:30. The Lodge will tell you when to be ready for departure).



CONTACT US

+27 83 601 9330 (Josh)

**ALL
OUT
SAFARIS**



Luxury Wildlife & Photo Safaris

TERMS & CONDITIONS



INCLUDED IN RATES:

- Air transfers to and from the Park and Johannesburg with FedAir
- All meals
- Two game drives per day
- Bush walk daily
- Tea & Coffee
- Drinking water
- Sundowner drinks (Elephant Plains)
- House wines and beers (Notten's)
- Gate entrance fees
- Sabi Sands Conservation Levy

EXCLUDED FROM RATES:

- Any other beverages not mentioned
- Special wines, champagne and spirits (Notten's)
- Anything else not mentioned above
- Purchases from curio shops, etc.
- Activities not mentioned in the itineraries
- Amenities such as room service, laundry service, spa treatments and products, etc.
- Personal expenses
- Gratuities

BOOKING CONFIRMATIONS:

A minimum of 2 guests is required to make a booking, unless specified otherwise (does not need to be sharing, can be separate groups of people). Confirmation of a booking is made in writing by the guests to All Out Safaris. A **50% non-refundable deposit** is required within 7 calendar days of confirmation of booking, unless specified otherwise. Where applicable, the balance of the payment of a booking is required 35 days prior to departure date. A 100% non-refundable payment is required if the booking is made less than 30 days prior to departure date.

No quotation issued by All Out Safaris and accepted by the guests shall be binding until such time as a final invoice has been issued by All Out Safaris.

CANCELLATION POLICY:

A fee will be charged for postponement of tours (the amount of which is dependant upon accommodation and other trade partner regulations). The tour can be undertaken within 1 year of original booking depending on accommodation availability. Depending on when you rebook your tour, there may be an increase in the price of the tour to cover the 2026 price increases.

CANCELLATION FEE STRUCTURE:

- Full refund if cancelled 30+ days prior to the start of the tour.
- 50% refund if cancelled 15-30 days prior to the tour.
- No refund if cancelled less than 14 days before the tour begins.

The refund **EXCLUDES** the applicable non-refundable deposit and the open vehicle drive amount.