

# SABI SANDS ROYALE SAFARI

Embark on a Royale Safari through the iconic Sabi Sands, South Africa's most celebrated private game reserve. Encounter Africa's most elusive wildlife, all while enjoying the refined luxury of world-renowned lodges at Dulini or Londolozi. Each offers a distinct blend of intimacy, elegance and immersive wilderness. From world-class photographic opportunities to serene moments by the fire, this is more than a safari, it's an exclusive journey into the soul of the wild.

**Accommodation: Dulini Moya or Dulini Leadwood or Dulini River Lodge, or Londolozi Varty Camp**



# ITINERARY

## 5-DAY PHOTO SAFARI:

### DAY 1:

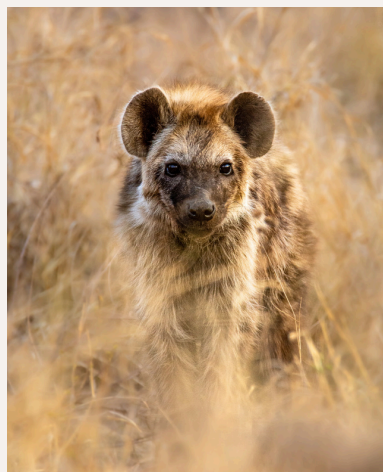
- Air transfer from Johannesburg O.R. Tambo to the Ulusaba (Dulini) or Londolozi airstrip (departure at 11:30 or 13:00 with check-in up to 1 hour before) and then transfer by road to the Lodge.
- Enjoy lunch and check in before afternoon drive with sundowners and snacks.
- Enjoy dinner at the lodge and settle in for the evening.
- Your guide will provide photographic instruction throughout the day, with time at the end of each sighting for debriefing.

### DAYS 2-4:

- Morning game drive with coffee and snacks.
- Breakfast back at the lodge and enjoy leisure time until lunch.
- Enjoy an afternoon game drive including sundowners and snacks.
- End your day off with dinner back at the lodge.
- Your guide will provide photographic instruction throughout the day, with time at the end of each sighting for debriefing.

### DAY 5:

- Final morning game drive with coffee and snacks before returning to the lodge for breakfast.
- Optional lunch before transferring back to Johannesburg from the Ulusaba (Dulini) or Londolozi airstrip (departure at 10:00 or 13:30. The Lodge will tell you when to be ready for departure).



## CONTACT US

+27 83 601 9330 (Josh)

**ALL  
OUT  
SAFARIS**



Luxury Wildlife & Photo Safaris

# TERMS & CONDITIONS



## INCLUDED IN RATES:

- Air transfers to and from the Park and Johannesburg with FedAir
- Ulusaba Passenger Tax (Dulini)
- Transfers to and from the lodge airstrip
- Two game drives per day
- All meals, teas and coffees daily
- Soft drinks, house wines, local brand spirits and beers
- Mini-bar & refreshments on game drive (Dulini)
- Bush walks
- Wi-fi
- Laundry service
- Dulini Sustainability Levy
- Gate entrance fees
- Sabi Sands Conservation Levy (Londolozi)

## EXCLUDED FROM RATES:

- Selected exclusive wines, premium and imported spirits and other beverages not mentioned
- Anything else not mentioned above
- Purchases from curio shops, etc.
- Activities not mentioned in the itineraries
- Amenities such as room service, spa treatments and products, etc.
- Personal expenses
- Gratuities

## BOOKING CONFIRMATIONS:

A minimum of 2 guests is required to make a booking, unless specified otherwise (does not need to be sharing, can be separate groups of people). Confirmation of a booking is made in writing by the guests to All Out Safaris. A **50% non-refundable deposit** is required within 7 calendar days of confirmation of booking, unless specified otherwise. Where applicable, the balance of the payment of a booking is required 35 days prior to departure date. A 100% non-refundable payment is required if the booking is made less than 30 days prior to departure date.

No quotation issued by All Out Safaris and accepted by the guests shall be binding until such time as a final invoice has been issued by All Out Safaris.

## CANCELLATION POLICY:

A fee will be charged for postponement of tours (the amount of which is dependant upon accommodation and other trade partner regulations). The tour can be undertaken within 1 year of original booking depending on accommodation availability. Depending on when you rebook your tour, there may be an increase in the price of the tour to cover the 2026 price increases.

## CANCELLATION FEE STRUCTURE:

- Full refund if cancelled 30+ days prior to the start of the tour.
- 50% refund if cancelled 15-30 days prior to the tour.
- No refund if cancelled less than 14 days before the tour begins.

The refund EXCLUDES the applicable non-refundable deposit and the open vehicle drive amount.