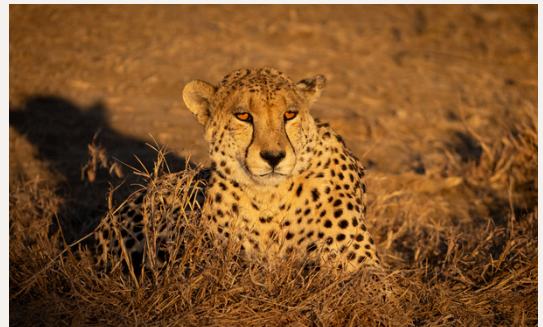
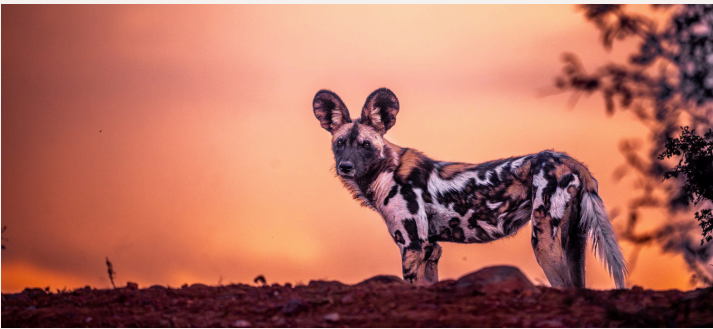


MADIKWE WILDERNESS ESCAPE

A 4-, 5-, or 6-day journey meticulously designed for the perfect Madikwe escape. Whether you're a seasoned traveller or new to safaris, this opportunity offers the best of Madikwe showing its remarkable habitat diversity and wildlife density, making it the ultimate way to experience South Africa's wildlife at its finest.

Accommodation: Jaci's Lodges



ITINERARY

4-DAY SAFARI:

DAY 1:

- Pick-up in Johannesburg transfer to Madikwe Game Reserve (air transfer can be added as an extra).
- Enjoy lunch and check in before afternoon drive with sundowners and traditional African snacks.
- Enjoy dinner at the lodge and settle in for the evening.

DAYS 2-3:

- Morning game drive with coffee and traditional African snacks.
- Breakfast back at the lodge and enjoy leisure time until lunch.
- Enjoy an afternoon game drive including sundowners and traditional African snacks.
- End your day off with dinner back at the lodge.

DAY 4:

- Final morning game drive with coffee and traditional African snacks before returning to the lodge for breakfast.
- Optional lunch before transferring back to Johannesburg (air transfer can be added as an extra).



5-DAY SAFARI:

DAY 1:

- Pick-up in Johannesburg transfer to Madikwe Game Reserve (air transfer can be added as an extra).
- Enjoy lunch and check in before afternoon drive with sundowners and traditional African snacks.
- Enjoy dinner at the lodge and settle in for the evening.

DAYS 2-4:

- Morning game drive with coffee and traditional African snacks.
- Breakfast back at the lodge and enjoy leisure time until lunch.
- Enjoy an afternoon game drive including sundowners and traditional African snacks.
- End your day off with dinner back at the lodge.

DAY 5:

- Final morning game drive with coffee and traditional African snacks before returning to the lodge for breakfast.
- Optional lunch before transferring back to Johannesburg (air transfer can be added as an extra).



6-DAY SAFARI:

DAY 1:

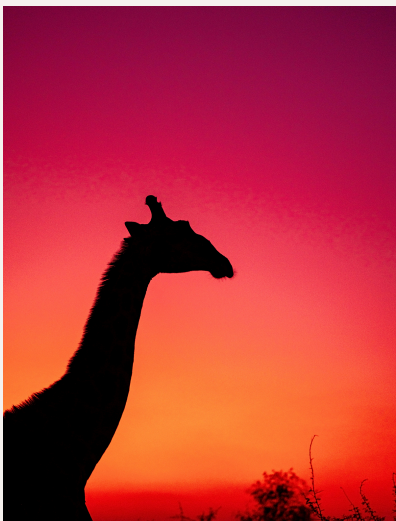
- Pick-up in Johannesburg transfer to Madikwe Game Reserve (air transfer can be added as an extra).
- Enjoy lunch and check in before afternoon drive with sundowners and traditional African snacks.
- Enjoy dinner at the lodge and settle in for the evening.

DAYS 2-5:

- Morning game drive with coffee and traditional African snacks.
- Breakfast back at the lodge and enjoy leisure time until lunch.
- Enjoy an afternoon game drive including sundowners and traditional African snacks.
- End your day off with dinner back at the lodge.

DAY 6:

- Final morning game drive with coffee and traditional African snacks before returning to the lodge for breakfast.
- Optional lunch before transferring back to Johannesburg (air transfer can be added as an extra).



CONTACT US

+27 83 601 9330 (Josh)

**ALL
OUT
SAFARIS**



Luxury Wildlife & Photo Safaris

ITINERARY (PHOTO SAFARI)

4-DAY PHOTO SAFARI:

DAY 1:

- Pick-up in Johannesburg transfer to Madikwe Game Reserve (air transfer can be added as an extra).
- Enjoy lunch and check in before afternoon drive with sundowners and traditional African snacks.
- Enjoy dinner at the lodge and settle in for the evening.
- Your guide will provide photographic instruction throughout the day, with time at the end of each sighting for debriefing.

DAYS 2-3:

- Morning game drive with coffee and traditional African snacks.
- Breakfast back at the lodge and enjoy leisure time until lunch.
- Enjoy an afternoon game drive including sundowners and traditional African snacks.
- End your day off with dinner back at the lodge.
- Your guide will provide photographic instruction throughout the day, with time at the end of each sighting for debriefing.

DAY 4:

- Final morning game drive with coffee and traditional African snacks before returning to the lodge for breakfast.
- Optional lunch before transferring back to Johannesburg (air transfer can be added as an extra).



5-DAY PHOTO SAFARI:

DAY 1:

- Pick-up in Johannesburg transfer to Madikwe Game Reserve (air transfer can be added as an extra).
- Enjoy lunch and check in before afternoon drive with sundowners and traditional African snacks.
- Enjoy dinner at the lodge and settle in for the evening.
- Your guide will provide photographic instruction throughout the day, with time at the end of each sighting for debriefing.

DAYS 2-4:

- Morning game drive with coffee and traditional African snacks.
- Breakfast back at the lodge and enjoy leisure time until lunch.
- Enjoy an afternoon game drive including sundowners and traditional African snacks.
- End your day off with dinner back at the lodge.
- Your guide will provide photographic instruction throughout the day, with time at the end of each sighting for debriefing.

DAY 5:

- Final morning game drive with coffee and traditional African snacks before returning to the lodge for breakfast.
- Optional lunch before transferring back to Johannesburg (air transfer can be added as an extra).



6-DAY PHOTO SAFARI:

DAY 1:

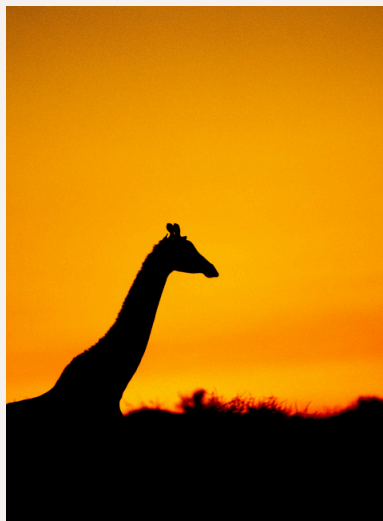
- Pick-up in Johannesburg transfer to Madikwe Game Reserve (air transfer can be added as an extra).
- Enjoy lunch and check in before afternoon drive with sundowners and traditional African snacks.
- Enjoy dinner at the lodge and settle in for the evening.

DAYS 2-5:

- Morning game drive with coffee and traditional African snacks.
- Breakfast back at the lodge and enjoy leisure time until lunch.
- Enjoy an afternoon game drive including sundowners and traditional African snacks.
- End your day off with dinner back at the lodge.

DAY 6:

- Final morning game drive with coffee and traditional African snacks before returning to the lodge for breakfast.
- Optional lunch before transferring back to Johannesburg (air transfer can be added as an extra).



CONTACT US

+27 83 601 9330 (Josh)

**ALL
OUT
SAFARIS**



Luxury Wildlife & Photo Safaris

TERMS & CONDITIONS



INCLUDED IN RATES:

- Road transfers to and from the Park and Johannesburg
- Private hospitality team including chef, housekeeper and waitron
- Twice-daily private game drives, including sunset / sunrise stops and night drives
- Park entrance fees and conservation levies
- All meals daily
- Local and specialised teas and filter coffee
- Select local house drinks including a variety of fine South African wines, spirits, beers and non-alcoholic beverages (subject to booking terms and conditions)
- Complimentary Wi-Fi access
- Access to Thutlwa Deck at Jaci's Safari Lodge
- Photographic guiding (only applicable for photo safaris)

EXCLUDED FROM RATES:

- Air transfers (can be added as an extra)
- Premium spirits, cocktails, wines and champagnes
- Purchases from curio shops, etc.
- Activities not mentioned in the itineraries
- Amenities such as room service, laundry service, spa treatments and products, etc.
- Personal expenses
- Gratuities

BOOKING CONFIRMATIONS:

A minimum of 2 guests is required to make a booking, unless specified otherwise. Confirmation of a booking is made in writing by the guests to All Out Safaris. A **50% non-refundable deposit** is required within 7 calendar days of confirmation of booking, unless specified otherwise. Where applicable, the balance of the payment of a booking is required 35 days prior to departure date. A 100% non-refundable payment is required if the booking is made less than 30 days prior to departure date.

No quotation issued by All Out Safaris and accepted by the guests shall be binding until such time as a final invoice has been issued by All Out Safaris.

CANCELLATION POLICY:

A fee will be charged for postponement of tours (the amount of which is dependant upon accommodation and other trade partner regulations). The tour can be undertaken within 1 year of original booking depending on accommodation availability. Depending on when you rebook your tour, there may be an increase in the price of the tour to cover the 2026 price increases.

CANCELLATION FEE STRUCTURE:

- Full refund if cancelled 30+ days prior to the start of the tour.
- 50% refund if cancelled 15-30 days prior to the tour.
- No refund if cancelled less than 14 days before the tour begins.

The refund EXCLUDES the applicable non-refundable deposit.